

Graft Milk Transport

Standard Farm Pickup Procedures

Bring hose to milk house via hose port

Do NOT use door.



Remove tank connection cap on bulk tank, sanitize tank connection, connect hose.

Do NOT open valve.

Wash hands.

Use small hand sink, dispose of paper towel used to dry hands

Smell Milk

Use small hole on tank

Visually check milk

Discoloration, debris

Check temperature

Use red case to hold thermometer
Sanitize thermometer in dipper solution
1 minute to take temperature
Keep hand out of milk
Rinse thermometer afterwards with water and replace in red case

Measure milk

If stick not inside of tank, close the lid
Wipe stick clean with NEW paper towel, not the one from washing hands.
Take multiple measurements until 2 match.

Close lid, start agitator

5 minutes for tanks \leq 1000 Gals
10 minutes for tanks $>$ 1000 Gals

Prepare sample bottles, do paperwork while agitating.

Graft Milk Transport



- ___ Once agitation is complete, turn off bulk tank.
Agitator switch to center position
Cooler(Timer) switch to off

- ___ Fill sample(s).
Agitate dipper in milk (3 times) to remove sanitizing solution.
Fill sample bottle to line, don't over fill, pour excess on floor not back into tank.
Do NOT rest (touch) dipper on bottle.
Do NOT open bottle until ready to pour sample milk
Do NOT put fingers in bottle.
Spray off dipper.

- ___ Open bulk tank valve and take sample bottle(s), dipper, spray bottle to truck.
Immediately put sample bottle(s) into ice chest.

- ___ Start pump on truck.
Ensure milk is pumping by visually checking tank to see that milk level is receding.

- ___ Complete paperwork.

- ___ Once bulk tank is empty, turn off truck pump, detach hose from bulk tank.

- ___ Spray out tank, close lid and prepare for washing.
Leave valve cap off.

- ___ Turn wash on if appropriate.

- ___ Check that bulk tank is off, lid closed, milk house hose is turned off/hung up and lights turned off.

- ___ Load hose, close back of truck.

Graft Milk Transport

Graft Milk Transport

1st Stop of the Day

- _____ **Fill dipper container and test**
1 cap full of Clorox bleach, the remainder water.
Use test strip to verify solution is at proper concentration (200 PPM).

- _____ **If necessary, fill spray bottle. Test It.**
Test it to ensure solution is at proper concentration (200 PPM).

- _____ **Prepare temperature control sample bottle.**
Use 2nd sample bottle.
NOT the farm sample bottle.
Must contain the following:
 - T C
 - Date
 - Time
 - Producer ID (i.e., I014)
 - Temperature
 - Initials

- _____ **Follow Standard Farm Pickup Procedures.**

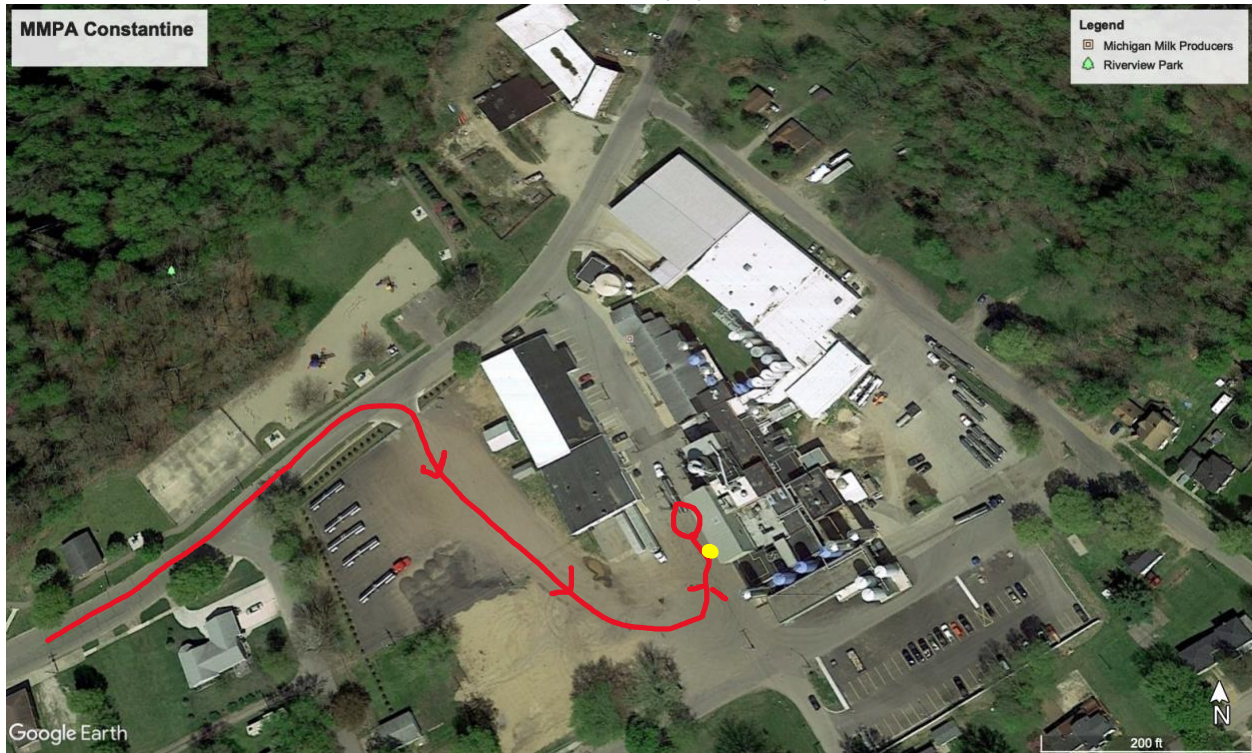
Graft Milk Transport

Last Stop of the Day

- ___ Follow Standard Farm Pickup Procedures.
- ___ Close truck tank valve.
- ___ Complete paperwork.
Put White/Yellow manifest pages along with wash tag on clipboard to turn in to receivers at dairy.
Put Pink manifest page in sample bottle and put in ice chest with samples.
Put remaining Gold pages inside clip board.
- ___ Seal back door of truck with seal provided with wash tag.
- ___ Check seal on top of tank.
If necessary, use the seal for the back door to seal the tank lid.

Graft Milk Transport

Arrival at Dairy (MMPA)



Follow red line and park at red circle. Receivers office is right inside the large garage door on the right.

___ Turn in paperwork to receiving office.

___ Package and place samples in cooler as directed at dairy.

Sample bottles are placed in plastic bags, along with bottle containing the pink paperwork.

Tank Specials and any other "special" samples are placed in separate bags along with associated paperwork.

___ Empty/refill ice chest with ice.