

Graft Milk Transport

0072-Tony Herman

7586 County Road D
Bryan, OH 43517



Milkhouse is marked by "Yellow" circle. Route is in "Red". Follow Red route into barn yard, making U-Turn, back to hose port.

Graft Milk Transport



Hose goes into hose port on outside of milk house.

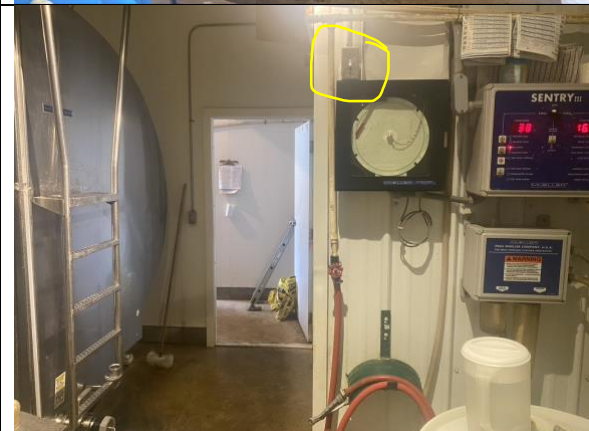


Pass hose thru 2 hose port shown on right wall.
Circled in Yellow.

This is the office which is directly on the left after entering the milk house.

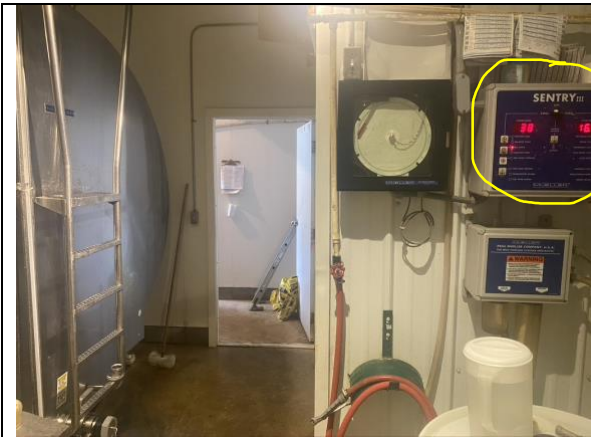


Door circled is where the milk tank is.

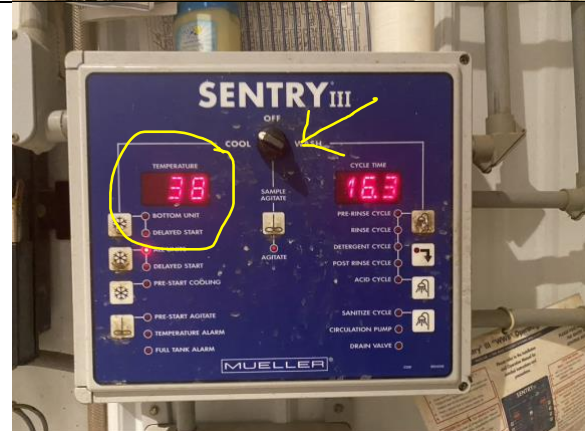


This is the view once of the tank room. Light switch is circled.

Graft Milk Transport



Control panel is circled. This panel performs **ALL** functions (i.e., Cooler/Agitator & Washer).

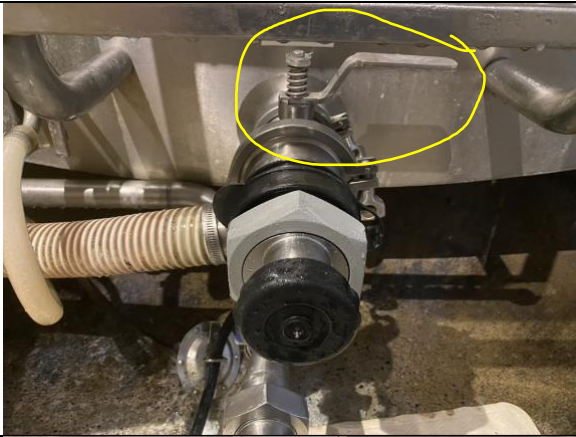


Use this panel to determine the milk temperature. Control knob "Yellow Arrow" should be turned to "Cool" when you arrive.

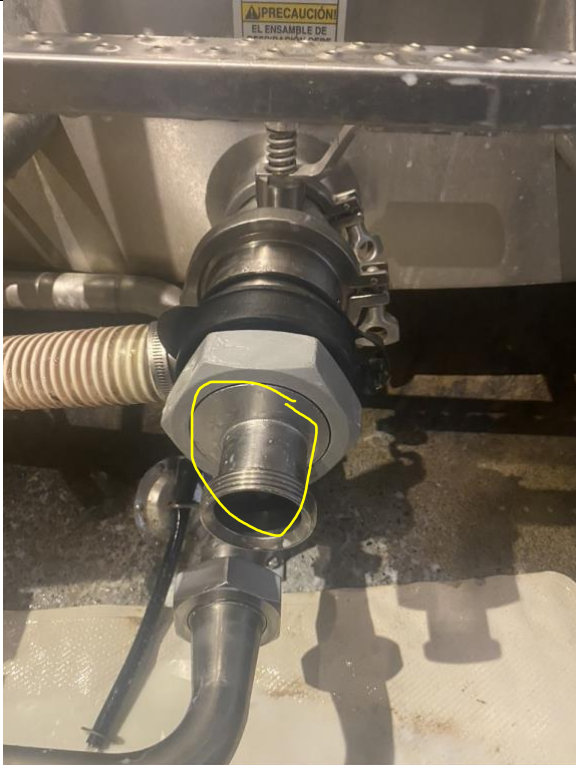


This is a view of how the tank will appear upon arrival. Valve body is capped (Yellow Circle).

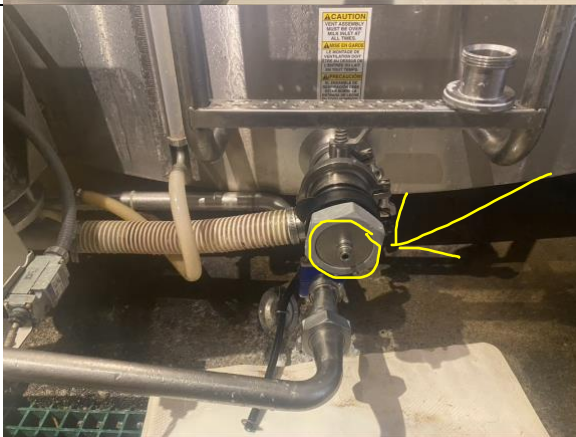
Graft Milk Transport



Notice that valve is closed "Circled".



Remove black cap from hose adapter. The circled piece is the hose adapter.



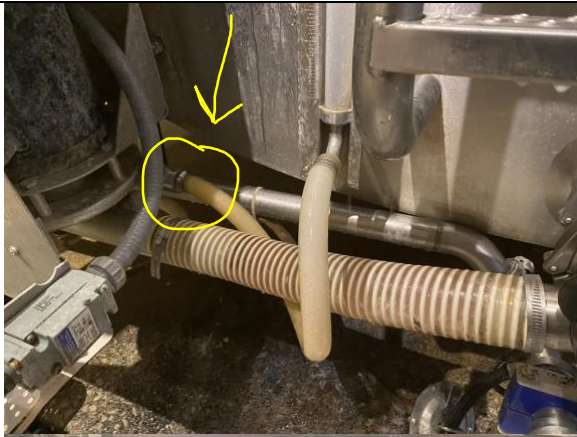
Find measuring hose adapter.

Generally found in a basket on the floor to the left of the valve assembly.

Install the measuring hose adapter, insuring the gasket is used.

Result should look like the picture.

Graft Milk Transport

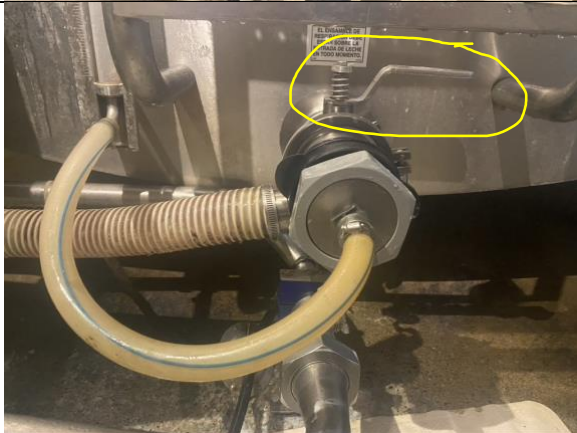


Find the end of the measuring hose, that is attached to the base of the washer "Circled".

Detach the end of the hose and attach to the measuring hose adapter.



This is how it should look following attachment of the measuring hose.



Open the valve SLOWLY with the handle (Circled).

Make sure to open slowly to insure the hose is securely connected.



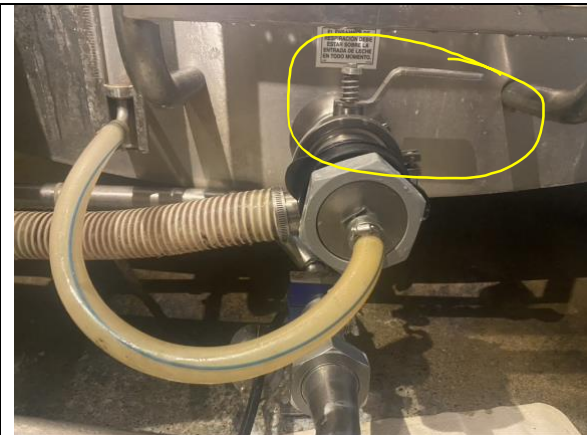
Measure milk level using the tube and ruler at the left of the ladder.

NOTE: You will need to wait 1-2 minutes for the air bubbles to disperse prior to taking a measurement.

Slide the marker (circled in red) to the level of the milk. Insure you are measuring milk, NOT bubbles.

Once milk level has settled and you have marked it with the indicator in the circled area.

Graft Milk Transport



Once milk level has settled and you have marked it with the indicator in the circled area.

Close the valve.

Remove the measuring hose.



Reattach measuring hose to the connection below the wash pump from which you removed it.

At this point, you CAN fill the sample bottle(s) from the measuring hose adapter by opening the valve SLOWLY and just a little.

NOTE: You open the valve too much or too quickly, you'll get a milk bath and make a mess.



Remove the measuring hose adapter from the valve assembly.

Graft Milk Transport



Attach the hose adapter to the valve assembly.

NOTE: Keep the valve CLOSED.



Attach the farm hose from the truck to the hose adapter as shown.

Open valve SLOWLY.

At this point, you are ready to begin pumping.

At this point, you should have:

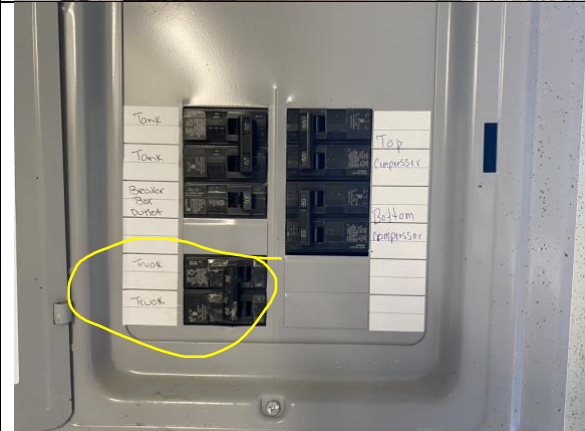
- Visually inspected and smelled the milk via the access port on the top of the tank.
- Documented the temperature from the Control Panel on the manifest.
- Measured and documented the milk level on the manifest.
- Taken your samples.
- Connected the farm hose from the truck to the milk tank.

Graft Milk Transport



Find this breaker panel.

It is just left of the door you use to enter from outside.



Turn on the bottom left breaker that is marked "Truck".



This supplies electricity to the electric plug outside the building, just next to the first hose port.

On the rear of the truck, remove the belt connecting the gas engine to the pump.

Then connect the electrical cord to the plug shown on the left.

Use the electric motor to begin pumping the milk.

NOTE: It takes approximately 35-45 minutes to pump on the milk, depending upon the volume.

Once your paperwork is complete. You'll need to setup the wash system.

Graft Milk Transport



There is a panel, directly below the Control Panel, where the container needing filled with detergent is attached.

Remove the largest container from the panel and empty into the drain in front of the milk tank.



You will find the barrel containing the detergent thru the doorway directly across from the main entrance to the milk house.



Go thru the doorway, angle left...

Graft Milk Transport



just to the right of the steps going down into the pit...



you'll see a white barrel with a hand pump on top.

Carefully using the hand pump, fill the container $\frac{3}{4}$ full with detergent.

NOTE: Very caustic detergent. Be careful not to splash or spill any.



Reattach the container to the panel.



Just below the panel you just attached the detergent container to, is a hose that is disconnected.

Connect this hose, using the quick connect, as shown.

The wash system is now ready. You DO NOT do anything else until the milk tank is empty and the pump stopped.

Graft Milk Transport



Once the milk tank is empty and you've turned off the pump.

Turn the milk tank off, using the black knob on the top of the Control Panel.

Disconnect the farm hose.

Remove the hose adapter from the valve assembly.

Rinse out the tank via the access hole on the top. Use the hose that is below the Control Panel.

Once the tank is rinsed, close the lid on the access hole on top and securely latch.

Graft Milk Transport



Then remove the rubber thread protector as shown.



Look for the plastic cap shown in the picture.

It is generally in the basket where you found the measuring hose adapter but may just be laying around near the milk tank.

Graft Milk Transport



Screw the plastic cap onto the valve assembly as shown. It will screw onto the threads that were revealed when you removed the rubber thread protector in the previous step.

NOTE: Ensure the valve is open.

Graft Milk Transport



Once the clear plastic cap is attached, turn the knob on the Control Panel to the “Wash” position.

Then press the top right button ONCE as shown.

This is what it should look like after pushing the button.

Turn off the breaker in the breaker box.

You're done!!!!